

# THE CHICK PAPERS

*Georgia Poultry Laboratory Network's Monthly Newsletter*



## Hatchery Monitoring - Georgia and Beyond

By Jeff Spivey

The Georgia Poultry Laboratory Network hatchery monitoring program is unique within the poultry industry. Over the last four years, the GPLN has utilized over 300,000 plates in the program!

The GPLN hatchery monitoring program plates 34 hatcheries monthly across five states in the southeast. The program utilizes TSA plates and contact plates. The concept of "baseline clean" is used when plating each hatchery. As much as logistically possible, our plating program is guided by two basic principles: 1) no processes on going in the hatchery and 2) hatcher dry, clean, and empty. By following these two principles, we can produce a report of how clean the hatchery is. Because we are a monitoring-based program, we do not seek to plate the entire hatchery during a visit. Instead, we plate every other machine available based on the forementioned principles. For example, one month we target even numbered machines and the following month we target odd numbered machines.

We have attempted to keep the program responsive to industry needs. The greater emphasis on antibiotic-free live programs puts more focus on a clean hatchery. To reduce the level of challenge to a chick, the surfaces the chick comes in contact with need to be clean. To that end, we focus a great deal of plating in hatcher and during secondary disinfection. This allows us to provide the company with numbers to analyze as they relate to basket wash temperatures, basket wash spray nozzle management, the effectiveness of their secondary disinfection product, management, and calibration of their secondary disinfection product along with an overview of their cleaning crews and general sanitation. The program also targets incubators, egg rooms and vaccine/in-ovo rooms. Because the program is so extensive, we can provide every participating company a wide range of data such as hatchery ages, machine types, as well as primary and secondary disinfection products as long as that information is made available to us.

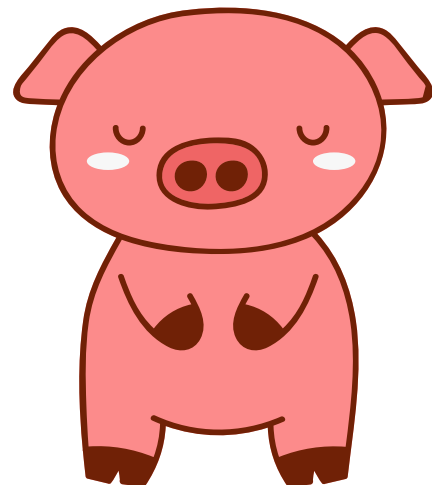
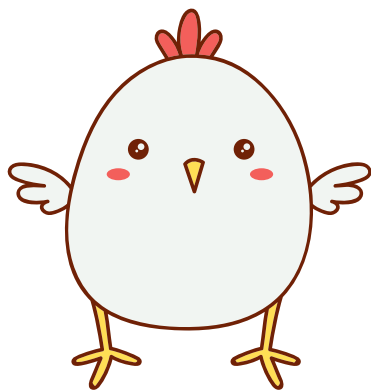
The demand for the program has driven us to expand beyond the borders of Georgia. Participating companies receive an individual hatchery plating report for each event detailing bacteria, aspergillus, and fungus counts. The company can see which specific machines had which specific counts based on our plating. At the end of each month, we provide a hatchery monitoring comparison report. That report presents raw data for each hatchery in the program on bacteria, aspergillus, and fungus. We also rank each company on bacteria score, aspergillus/fungus score and total combined score. Individual company names are obscured so that confidentiality can be maintained while giving managers across five states a wide view of industry and how they compare to other hatcheries.





May 2021 brought a fun group of homeschoolers who have a desire to learn about agriculture to our lab. They get an "on-the-farm" education complete with field trips through Freebird Farm's educational program in Fayetteville. We had a splendid time answering lots of questions!

# What's the difference between Bird Flu and Swine Flu?



**ONE REQUIRES TWEETMENT  
AND THE OTHER REQUIRES  
OINKMENT.**